

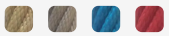
TMP-US-5118

Astoria-Megler Bridge A


Robinia wood challenging rope structure model
Astoria-Megler Bridge A

The Astoria-Megler Bridge A structure is made from European Robinia wood and is part of the Big Four Bridge challenging ropes course. It consists of two stable wooden posts with a rope net stretched between them. It is designed for balance challenges and stable movement using hands and feet, while improving coordination and strength. This structure can stand independently, providing a unique and challenging climbing experience for children and youth.


Robinia Wood: 


Rope Cables: 



 Ages 5-12

 Users 4

 Dimensions L: 8'-6.1" W: 0'-8.4" H: 3'-2.4" | cm L: 266 W: 22 H: 100

 Fall Height 2.24' | 70 cm

 Accessible



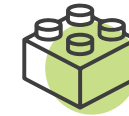
Climbing Element

The climbing element offers a physical challenge that develops muscle strength, coordination, and balance. Climbing on the element encourages children to overcome fears and build self-confidence and perseverance. Additionally, the element helps develop problem-solving skills as children look for efficient and safe ways to climb.



Hand and Foot Holds

Hand and foot holds provide support during play and use of the structure. Players develop their strength and coordination while maintaining stability and security.



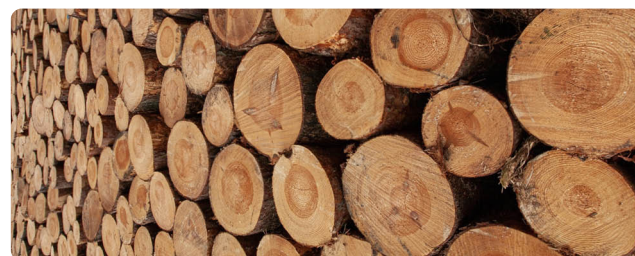
Motor Development

Foot-eye coordination - Improving coordination and balance through various equipment. Hand-eye coordination - Developing coordination and precision in activities requiring fine motor skills



Physical Development

Balancing- Improving balance and posture



Robinia Wood

European Robinia wood is natural, robust, and durable, particularly suitable for use in outdoor playground equipment. It complies with stringent standards such as FSC, has a smooth and pleasant touch, a natural and authentic appearance, and integrates well with natural surroundings. Its high durability, long lifespan, and being a natural and safe material make it a popular choice for use in playground equipment.



Rope Cables

Rope Cables are made of synthetic polypropylene (PP) fibers combined with a galvanized steel core for improved strength and durability. They meet strict standards, such as ASTM A240 and EN 10088, ensuring durability and safety for use in playground equipment. The cables offer a soft and pleasant touch that does not harm the hands during use and are available in various diameters and colors, allowing for creative and aesthetic design.

