

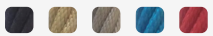
TMP-US-10978B

Bubbles B

Extreme play system model Bubbles B 2 towers

Recycled HDPE: 

Steel: 

Rope Cables: 



Rotation



Crawling



Climbing



Sliding



Ages 5-12



Users 173



Dimensions L: 28'-10" W: 61'-2.6" H: 27'-6.2" | cm L: 901 W: 1913 H: 250



Safety Zone 43'-9.7"/77'-4.7" | cm 1333/2357

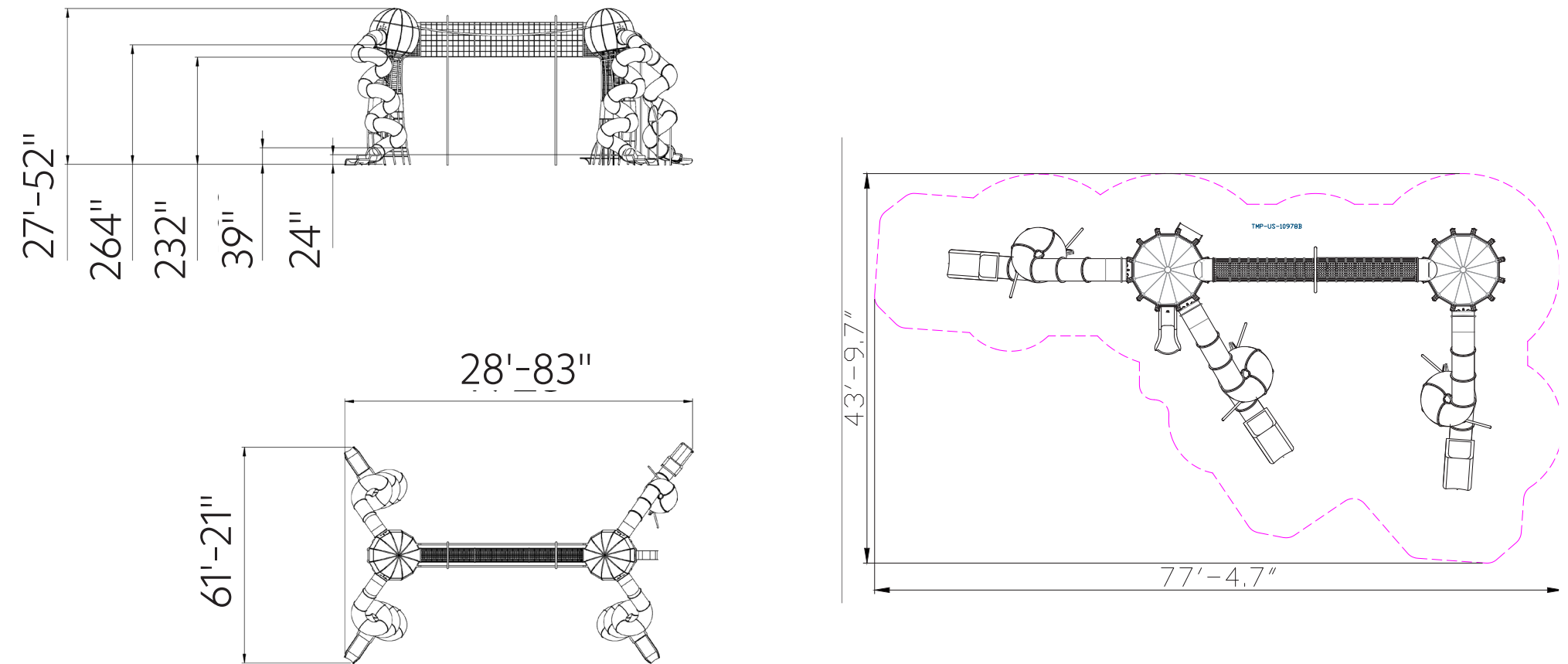


Fall Height 8' | 250 cm



Accessible

The Bubbles B is a unique and large extreme play structure that won the prestigious REDDOT award in 2019 for its stunning and innovative design. The structure combines elements of play and activity aimed at the physical and cognitive development of children. Bubbles B is built from two tall towers topped with round bubbles featuring transparent polycarbonate windows that create a sense of openness and light, along with bridges and slides. Each element in the structure is carefully designed, allowing children to experience diverse activities of climbing, sliding, and imaginative play.



Recycled HDPE

HDPE (High-Density Polyethylene) is a recycled material made from high-density polyethylene, produced from recycled materials that allows for further recycling. It excels in resistance to UV rays and wear and tear, making it particularly suitable for use in outdoor playground equipment. Its touch is smooth and pleasant, and its appearance is maintained over time. The advantages include high resistance to harsh weather conditions and environmental preservation. The material is capable of absorbing high energy, which helps prevent fractures.



Steel

Steel structure that is strong and durable, oven-painted galvanized and coated with lead-free polyester powder for corrosion and rust resistance. The steel meets strict EN 1176 standards, ensuring high quality and safety. The steel is anti-vandalistic, requires minimal maintenance, and is fully recyclable. The high-quality paint ensures weather resistance and maintains a new appearance over time.



Rope Cables

Rope Cables are made of synthetic polypropylene (PP) fibers combined with a galvanized steel core for improved strength and durability. They meet strict standards, such as ASTM A240 and EN 10088, ensuring durability and safety for use in playground equipment. The cables offer a soft and pleasant touch that does not harm the hands during use and are available in various diameters and colors, allowing for creative and aesthetic design.



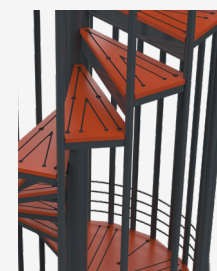
REDDOT Design Award

Winner of the prestigious RED-DOT International Design Award for 2019, granted for excellence in design for innovative, unique, and advanced products in their field.



Closed Bridge

passage between parts of the structure, developing players' motor skills and balance. The bridge offers a sense of security in a protected environment while maintaining the element of adventure and challenge. The height effect adds a dimension of excitement as players face height in a safe and protected environment. Playing on the bridge



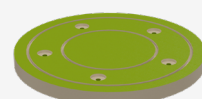
Climbing Element

The climbing element offers a physical challenge that develops muscle strength, coordination, and balance. Climbing on the element encourages children to overcome fears and build self-confidence and perseverance. Additionally, the element helps develop problem-solving skills as children look for efficient and safe ways to climb.



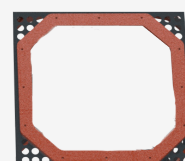
Barrel Slide

combining movement with a sense of adventure. Sliding in this slide develops players' motor skills and coordination as they move through the tube at varying speeds. The sliding action boosts self-confidence and encourages daring as players face the challenge of fast movement. The slide is a fundamental and important element in any playground and is considered one of the leading and most beloved attractions for players of all ages.



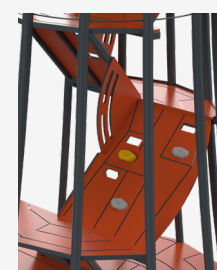
Tread Surface

The tread surface provides support and safety during play on the structure. The surface is designed to prevent slipping and improve players' stability and security.



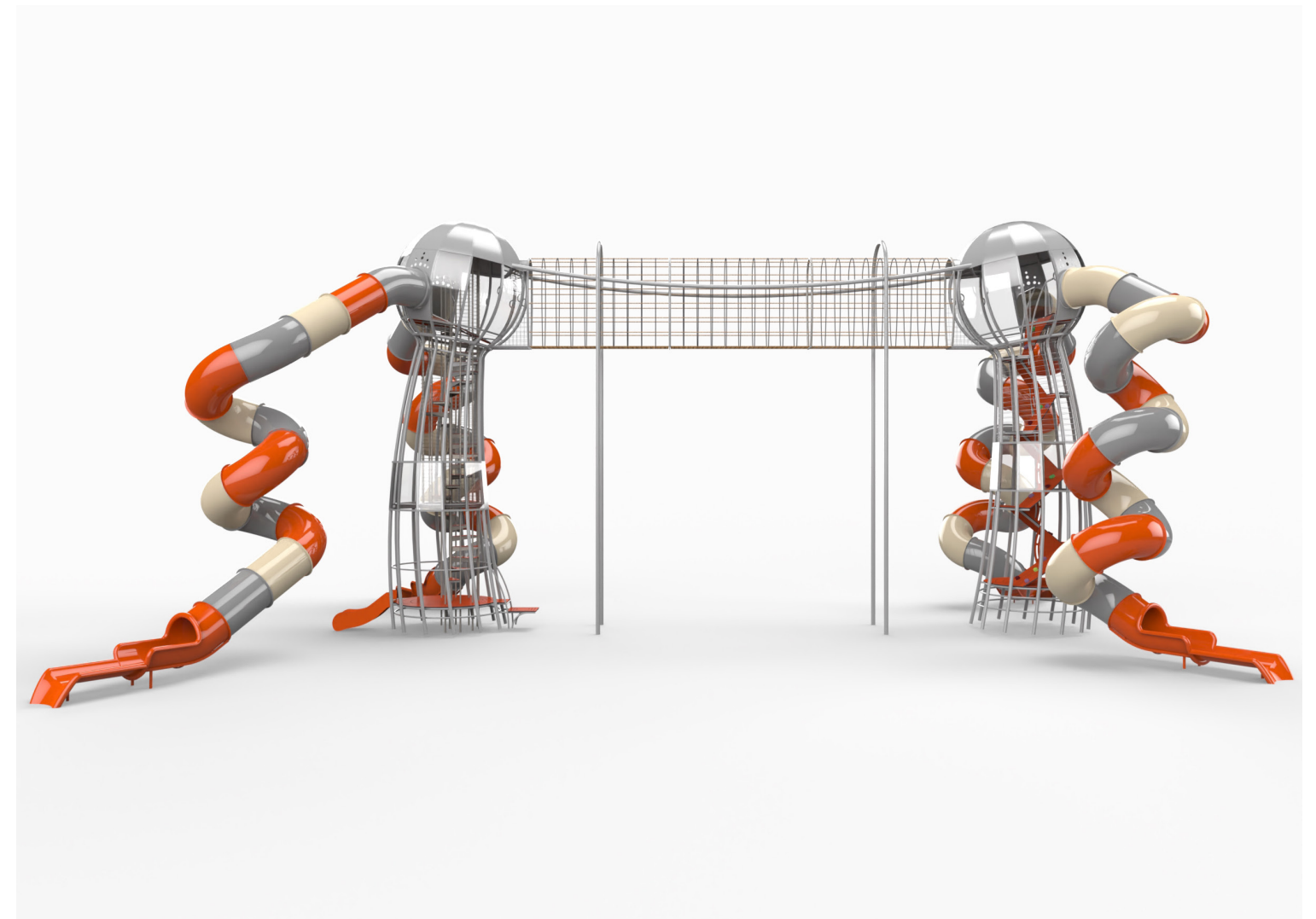
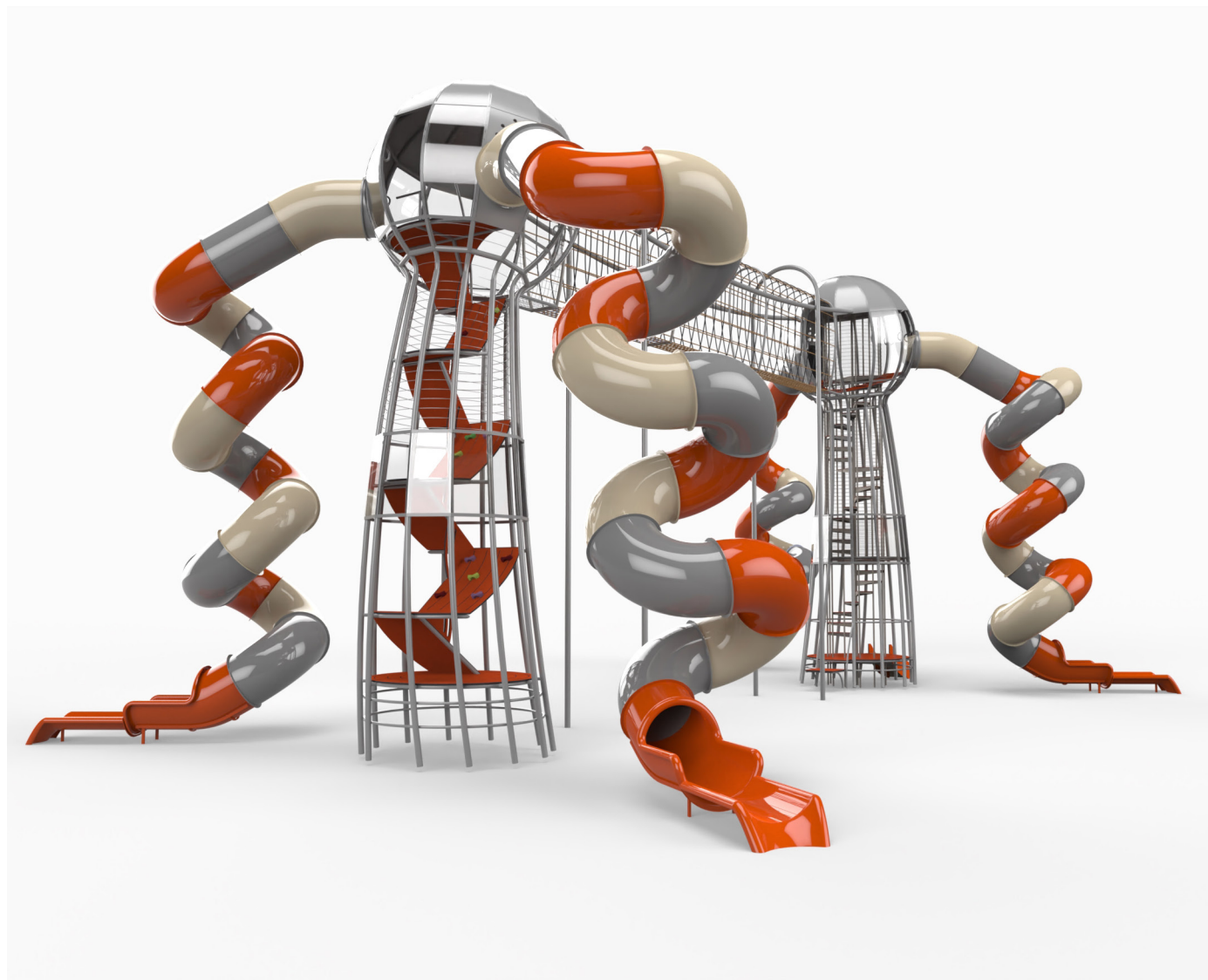
Ventilated Panel

The ventilated panel offers an activity that stimulates the sense of touch and provides a feeling of wind and freshness. Playing with the panel develops players' motor and sensory skills.



Climbing Element

The climbing element offers a physical challenge that develops muscle strength, coordination, and balance. Climbing on the element encourages children to overcome fears and build self-confidence and perseverance. Additionally, the element helps develop problem-solving skills as children look for efficient and safe ways to climb.



Physical Development

Climbing - Strengthening arm and leg muscles, developing fitness and endurance
Crawling - Strengthening abdominal and back muscles, improving coordination and flexibility.
Sliding - Strengthening leg and arm muscles and improving coordination.



Motor Development

Foot-eye coordination - Improving coordination and balance through various equipment.
Hand-eye coordination - Developing coordination and precision in activities requiring fine motor skills.



Emotional Development

Courage- Facing fears and new challenges. Confidence- Building self-confidence and belief in one's personal abilities. Independence- Developing independence and the ability to make personal decisions. Resilience- Coping with failure and trying again.



Social Development

Communication- Developing effective and clear communication skills with playmates
Friendship creation- Creating friendships and strengthening social bonds.
Communication- Developing effective and clear communication skills with playmates .



Cognitive Development

Concentration- Developing the ability to focus and maintain attention in equipment requiring concentration.
Spatial awareness- Improving the ability to understand and navigate space through mazes and courses..
Balancing- Improving balance and posture.