

TMP-US-10746

Balloons 3 GD

Extreme play system model Balloons 3 GD

Rope Cables: 

Steel: 



Balancing



Crawling



Climbing



Sliding




Jumping





 Ages 5-12

 Users 289

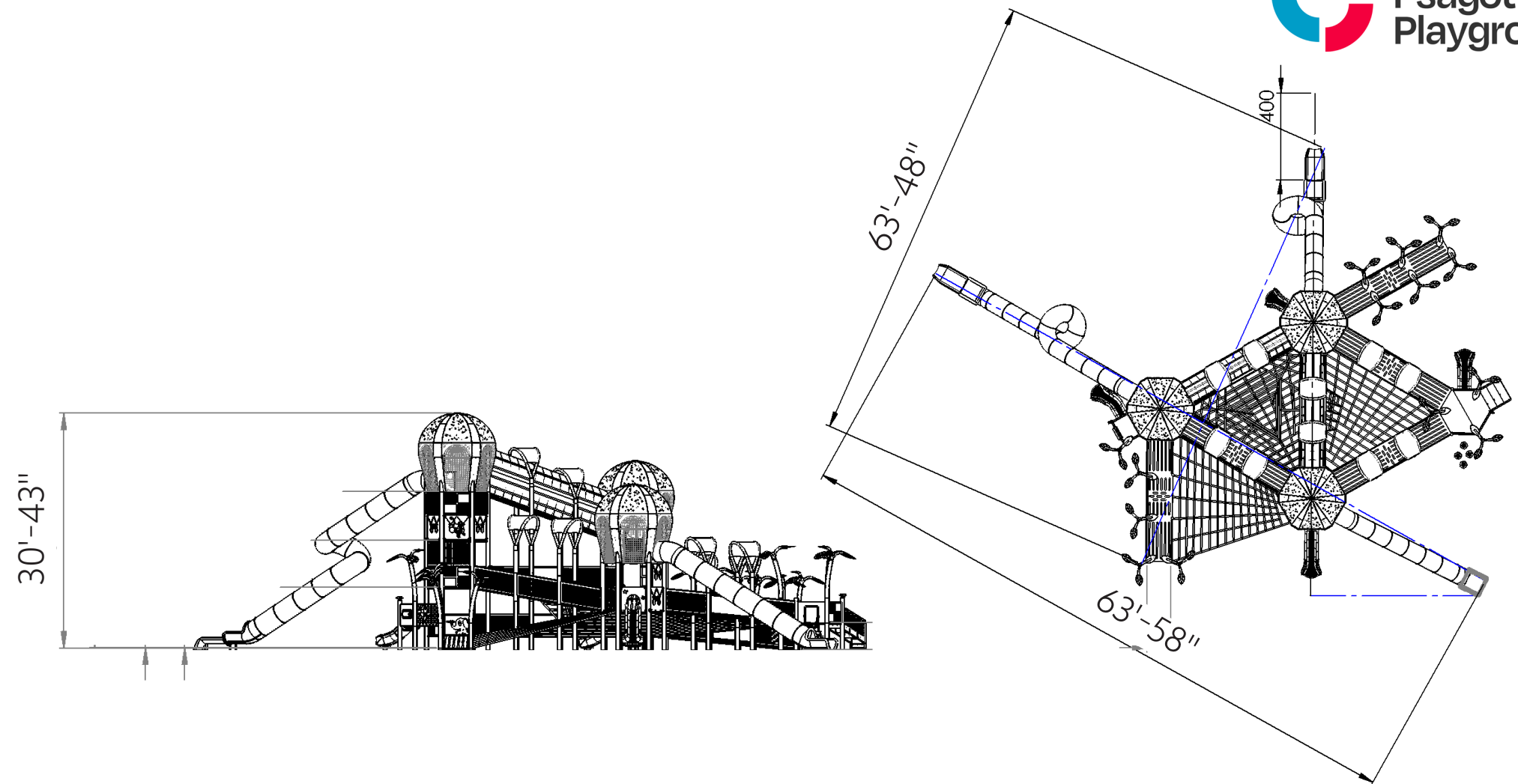
 Dimensions L: 63'-7" W: 63'-5.9" H: 30'-5.2" | cm L: 1987 W: 1984 H: 951

 Safety Zone 1140"/823" | cm 2897 / 2091

 Fall Height 7.68' | cm 240

 Extra accessibility

The Balloons 3 GD is an impressive, innovative, and uniquely designed play system that won the prestigious GOOD DESIGN 2022 award, offering users a rich and challenging play experience.



Steel

Steel structure that is strong and durable, oven-painted galvanized and coated with lead-free polyester powder for corrosion and rust resistance. The steel meets strict EN 1176 standards, ensuring high quality and safety. The steel is anti-vandalistic, requires minimal maintenance, and is fully recyclable. The high-quality paint ensures weather resistance and maintains a new appearance over time.



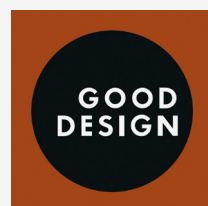
Rope Cables

Rope Cables are made of synthetic polypropylene (PP) fibers combined with a galvanized steel core for improved strength and durability. They meet strict standards, such as ASTM A240 and EN 10088, ensuring durability and safety for use in playground equipment. The cables offer a soft and pleasant touch that does not harm the hands during use and are available in various diameters and colors, allowing for creative and aesthetic design.



Recycled HDPE

HDPE (High-Density Polyethylene) is a recycled material made from high-density polyethylene, produced from recycled materials that allows for further recycling. It excels in resistance to UV rays and wear and tear, making it particularly suitable for use in outdoor playground equipment. Its touch is smooth and pleasant, and its appearance is maintained over time. The advantages include high resistance to harsh weather conditions and environmental preservation. The material is capable of absorbing high energy, which helps prevent fractures.



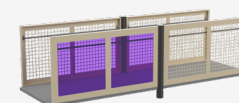
GOOD DESIGN Award

Winner of the GOOD DESIGN International Design Award for 2022, granted for outstanding and innovative design focusing on the highest level of quality, functionality, and aesthetics. The award is given to products that surpass the ordinary, embodying a design process that reflects excellence, durability, and strong public identity.



Roof

The roof provides shade and protection from the sun and rain, allowing players to enjoy play in comfortable conditions. In addition to its functional role, the roof is designed to enhance the look of the structure and align with the story told by the design of the play structure. The roof design contributes to creating an engaging and unique play environment that stimulates imagination and enriches the players' play experience.



Rubber Mat

A high-quality rubber strip made of durable and safe material for prolonged and safe use. Resistant to varying weather conditions and offers high wear resistance, ensuring minimal maintenance and a pleasant and safe play experience.



Musical Panel

The musical panel stimulates the sense of hearing and encourages players to create and play sounds and melodies. Playing with the panel develops players' creativity, rhythm, and coordination.



Transparent Slide Sections

Transparent slide sections add an interesting visual element to slides. The transparency of the sections allows for maintaining eye contact between the companion and the player during the slide, enhancing the sense of security and comfort for both parties. The transparent sections provide a unique and enjoyable sliding experience while maintaining a sense of connection and safety.



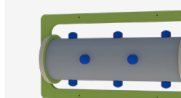
Kalani Stepping Stones

Kalani stepping stones provide safe and pleasant surfaces for climbing and playing. Players develop physical skills such as strength, coordination, and balance while walking on the stones. The stepping stones encourage players to explore their environment and build self-confidence and independence as they enjoy the sense of achievement with every step.



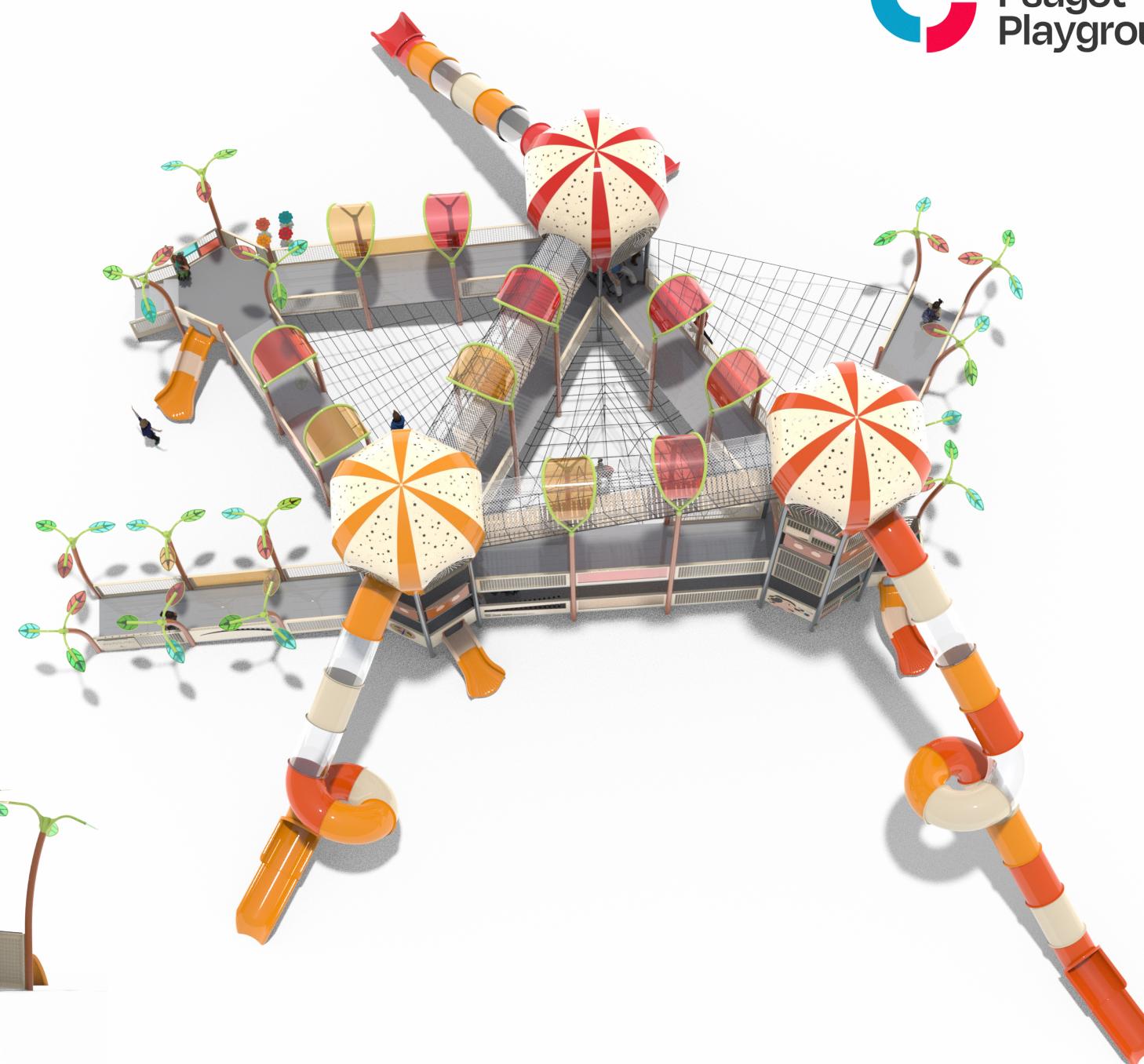
Decorations and Accessories

Decorations and accessories adorn the structures and highlight the theme of the playground. They encourage players to use their imagination and creativity during play.



Play Panel

The play panel provides a variety of interactive play options that develop players' motor and cognitive skills. Each panel offers a unique activity that stimulates thinking and encourages players to learn and discover more.



Motor Development

Foot-eye coordination - Improving coordination and balance through various equipment. Hand-eye coordination - Developing coordination and precision in activities requiring fine motor skills.



Cognitive Development

Spatial awareness- Improving the ability to understand and navigate space through mazes and courses.. Curiosity - Encouraging exploration and discovery through equipment providing new and unfamiliar experiences. Creativity- Developing creative thinking and imagination in open and interactive play.



Emotional Development

Imagination- Encouraging imagination and creating play worlds. Courage- Facing fears and new challenges. Confidence- Building self-confidence and belief in one's personal abilities. Independence- Developing independence and the ability to make personal decisions. Resilience- Coping with failure and trying again.



Motor Development

Foot-eye coordination - Improving coordination and balance through various equipment. Hand-eye coordination - Developing coordination and precision in activities requiring fine motor skills.



Physical Development

Climbing - Strengthening arm and leg muscles, developing fitness and endurance Crawling - Strengthening abdominal and back muscles, improving coordination and flexibility. Balancing- Improving balance and posture. Sliding - Strengthening leg and arm muscles and improving coordination.